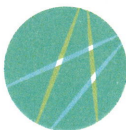




CULTURALLY RESPONSIVE LEADERSHIP

Race, Equity, and the Arts
in Education and Community

November 14-15 | Dover, NH



New Hampshire
State Council on the Arts



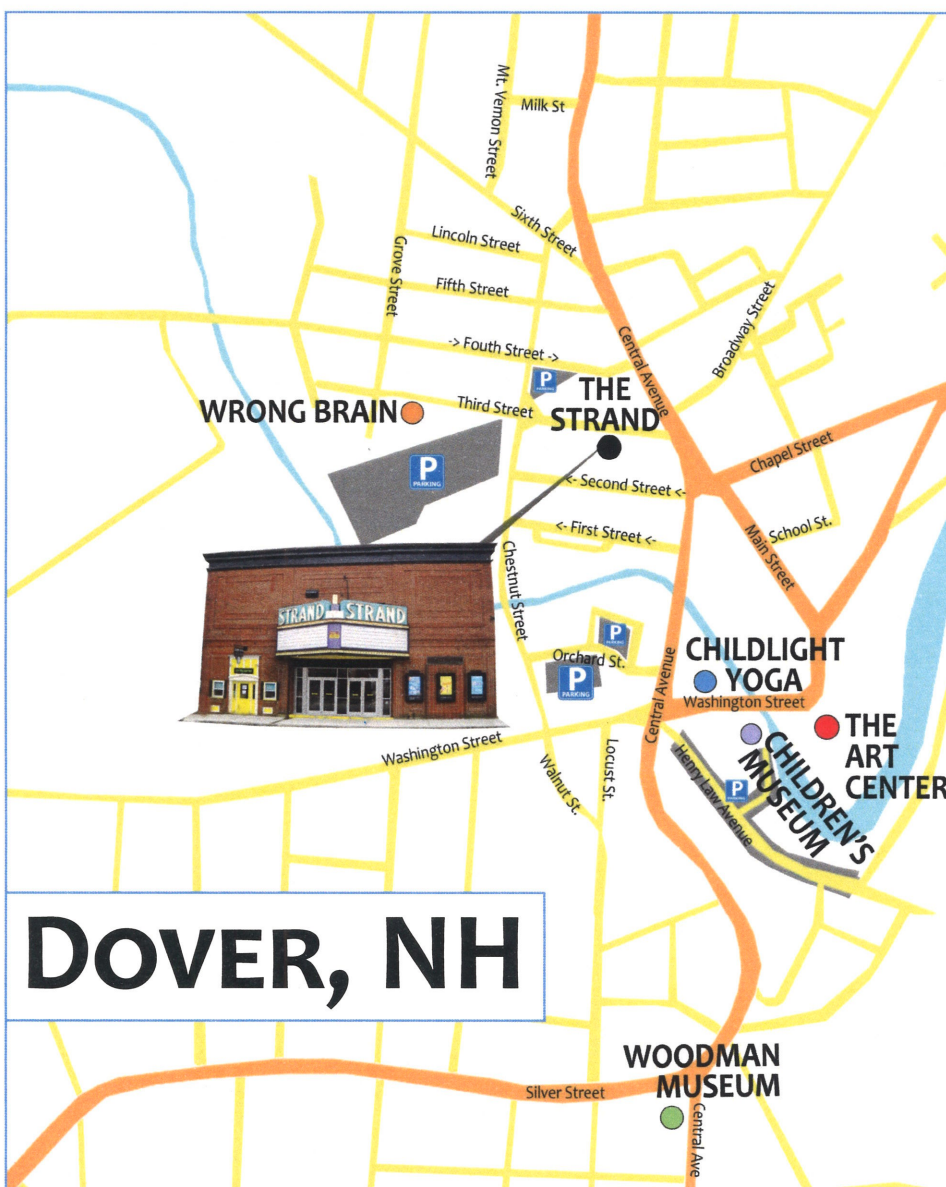
NATIONAL
ENDOWMENT
for the **ARTS**
arts.gov

The New Hampshire State Council on the Arts has been committed to excellence in the arts since our inception in 1965. Founded the same year as the National Endowment for the Arts, we commit to championing policies and practices that are inclusive, accessible, equitable, and celebrate our diversity. We recognize that artists, organizations, cultural stakeholders- and our youth- may face practical barriers due to systemic unequal power, privilege, and access. In our 2019 Strategic Plan, we have prioritized equity in all of our grantmaking and programs. It is a core value we work toward every day, and we will always be learning how to do this better. Throughout this conference, we are pleased to bring together a convergence of presenters and attendees who are committed to learning how we can be culturally responsive to the intersectionality of the audiences and youth we serve. We are grateful to the Dover Arts Commission for their partnership.

Julianne Gadoury
Arts Education & Poetry Out Loud Coordinator
New Hampshire State Council on the Arts

CONFERENCE LOCATIONS

- **THE STRAND** - 20 Third Street
 - **CHILDLIGHT YOGA**
53 Washington Street, 343-4116, childlightyoga.com
 - **THE CHILDREN'S MUSEUM OF NH**
6 Washington Street, 742-2002, childrens-museum.org
 - **THE ART CENTER**
1 Washington St., #177, 978-6702, theartcenterdover.com/index.php
 - **WOODMAN MUSEUM**
182 Central Ave., 742-1038, Open W-Su, 10-5, woodmanmuseum.org
 - **WRONG BRAIN**
66 Third Street #B1, Open Th 12-5, and F 12-7, wrongbrain.net
- MINDSEYE DESIGNS ART GALLERY & STUDIO**
660 Central Ave. #102, 842-5784, M-F 9-3, communitypartnersnh.org
- ROCHESTER PERFORMING ARTS CENTER**
32 N. Main Street, Rochester, NH



DOVER, NH

To Garrison Hotel & Suites:

- take Central Ave. S (NH-9 / NH-108)
- R. onto Silver St. (NH-9)
- enter roundabout, and take first exit onto Sterling Way
- destination is on the R. (200 Sterling Way)

Directions to (RPAC)
Rochester Performing
Arts Center (for Thursday
night's reception) will be
provided to those who
need it.

8:30 AM - REGISTRATION - *The Strand*

9:00 AM
OPENING
The Strand

OPENING - Spoken word artist, **Rajnii Eddins** kicks off the two-day immersive experience with collective affirmations on the power of our stories.

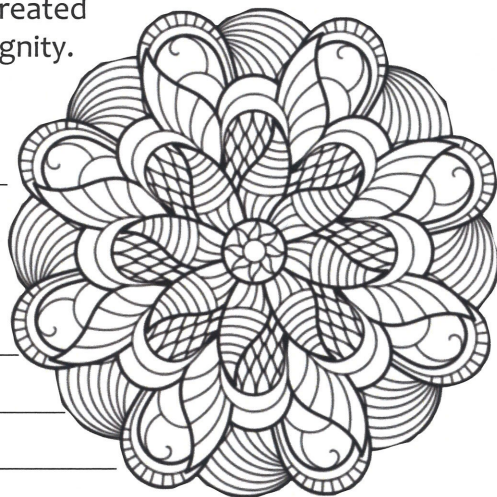
9:30 AM
KEYNOTE
The Strand

CULTURALLY RESPONSIVE CREATIVE YOUTH DEVELOPMENT *Nicole Amri*

SAY Sí is supporting the future creative leaders of San Antonio, promoting college attainment, economic development, and civic engagement. **Nicole Amri**, SAY Sí's Program Director and Creative Youth Development National Advisor, walks us through their philosophy in engaging young voices and giving them a seat at the table, shaping their futures and the future of San Antonio.

10:15 AM
KEYNOTE
The Strand

THEIR NAMES ARE MINE *Rajnii Eddins - The Strand*
Selections from his 2019 title, *Their Names are Mine*. Rajnii's work serves as a resource to confront white supremacy as well as any dehumanizing system. His goal is to inspire educators, students and human beings to affirm our common humanity and be reminded that we are reflections to be treated with respect, compassion, and dignity.



Full Gatherings - Performances - Workshops

11:00 AM
WORKSHOP
BLOCK

Acknowledging the Elephant in the Room
Catherine Stewart & Genevieve Aichele - The Art Center

Workshop explores a variety of applied theatre techniques for using drama to encourage communication about difficult topics. Incorporating playreadings, discussions, and models for applying theatre techniques to enhance social emotional learning.

After School & The Arts: A Partnership for At-Risk Youth Expression
Dover Teen Center - Childlight Yoga

Equal parts of presentation and group conversation, participants will gain ideas on how to engage youth in traditional arts, music, storytelling, and more. As well as learn methods on how to find community partners and grant funding.

Connecting Culturally Responsive Teaching with Competencies

David Dik & Marcia McCaffrey - Childlight Yoga

Discussion will delve into what it means to be a culturally responsive arts leader and arts organization. Participants will identify needs and outcomes for driving state-wide priorities and opportunities to raise up arts education in NH.

Creative & Critical Communities of Practice - Part A

Laura Reeder - The Art Center

Two-part workshop* for arts educators, teaching artists, community leaders, and administrators to identify resources for strengthening creative and artistic educational communities for learners while addressing critical issues such as racism, immigration, ability, gender identity, poverty, and other inequities. ***You must participate in both parts of this two-part workshop.**

Inside Out: Community Portraits *Somayeh Kashi - Wrong Brain Studio*

Have you ever wanted to create a meaningful community project involving your students and or other members of your community? Inside Out is a global participatory art project with the potential to change the world, giving everyone the opportunity to share their portrait and make a statement for what they stand for.

Music, Therapy, and UDL *Shannon Laine, MT-BC - The Strand*

Explore techniques & methodologies for promoting successful inclusion of special needs individuals within a standards driven music education environment.

The Value of Our Stories *Rajnii Eddins - The Strand*

All of our stories must be valued. Rajnii Eddins utilizes spoken word as a tool to hold space for vulnerable sincere engagement in conversation on race, culture, equity, and the richness to be found in each of our stories.

West for Equality: A Space for LGBTQ+ Youth

Richella Simard - Woodman Museum

Founding faculty advisor to West for Equality (WE) at Manchester West HS, Richella Simard will share her learning journey in creating space for LGBTQ+ voices to be heard and integrated into the fabric of school culture.

12:30 PM - NETWORKING LUNCH visit Dover’s many restaurants, coffee shops, and eateries with new and old friends.

1:00 PM - NEFA CREATIVEGROUND MIXER (OPTIONAL)

New England Foundation for the Arts (NEFA) - The Strand

Grab your lunch and join NEFA. Explore ways you can use CreativeGround to grow and show your creative network online as well as access powerful resources through NEFA’s performing arts grant programs including New England States Touring (NEST).

**2:00 PM
PANEL
The Strand**

LEADING WITH YOUTH VOICE - Pittsfield Youth Voice in it Together (PYViIT), Bill Rogers, & Katie Donovan

Centering youth voice and supporting their leadership can help communities grow more authentically to the needs and interests of our young people. Hear from three communities - Pittsfield, Somersworth,

and Dover on their inspiring efforts to create space for the intersectional lives of our young leaders.

**3:30 PM
WORKSHOP
BLOCK**

**Creative & Critical Communities of Practice - Part B
Laura Reeder - The Art Center**

Two-part workshop* for arts educators, teaching artists, community leaders, and administrators to identify resources for strengthening creative and artistic educational communities for

learners while addressing critical issues such as racism, immigration, ability, gender identity, poverty, and other inequities. **You must participate in both parts of this two-part workshop.*

Creative Youth Development Nicole Amri - Woodman Museum

How does true Creative Youth Development impact everyone around our youth? In this workshop, participants get a look inside SAY Sí, explore what CYD means to the educator, administrator, manager and beyond, and summon the collective expertise in the room to move towards equity in the work.

“I AM” Using Art and Literacy for People with Disabilities

Taintor Child - The Art Center

Brief overview of development of the MindsEye Designs program, “I AM”. Conceived and developed to provide expressive opportunities using visual art and literacy for adults with disabilities and provide experience with vocal and visual presentation in the arts. Participants will experience eleven featured “I AM” works and poems made by MindsEye Designs’ artists, followed by a discussion about the

relevance and adaptability of the project today. Time for visualization, self reflection, writing and making a simple “I AM” souvenir to cap the afternoon’s workshop.

Social Location Space

Pittsfield Youth Voice in it Together (PYViIT) - Childlight Yoga

This interactive, youth-led workshop relies on dynamic images represented in popular culture through memes, photographs, and cartoons to raise awareness of complex social structures that support inequality. This valuable experience will prove the power of youth voice and art to ignite social justice reform.

The Value of Our Stories Rajnii Eddins - The Strand

All of our stories must be valued. Rajnii Eddins utilizes spoken word as a tool to hold space for vulnerable sincere engagement in conversation on race, culture, equity, and the richness to be found in each of our stories.

Voices in Film Unbound from Borders

Katie Donovan and William Rogers - The Strand

Bill Rogers, an educator, helps others to create media from the stories we’re lucky enough to experience. From ski racers, to people with disabilities, to students with cameras and microphones in hand, SomeCity finds life on the edge. The mission of SomeCity, located in downtown Somersworth, is to bring to life stories that change all of us.

Girls + STEAM: Afterschool and Community Partnership

Children’s Museum of NH - Children’s Museum of NH

Girls + STEAM is a partnership between the Children’s Museum, Seymour Osman Community Center (Dover Housing Authority), and the Woodman Park Elementary School in Dover. Third and fourth grade girls in the SOCC afterschool program, free to participants, engage students in a one-hour STEAM program each week. Workshop participants will participate in their own STEAM challenge and see the SOCC program in action. **A museum tour will be available for those interested.**

**5:15 PM
TOUR**

TOUR: The Children’s Museum of NH

Open to all conference attendees at no charge.

**7:00 PM
RECEPTION**

CREATIVE CONNECTION RECEPTION (OPTIONAL)

Rochester Performing Arts Center (RPAC)

32 N. Main Street Rochester

Don’t miss this opportunity to connect with fellow conference attendees in a relaxed environment while enjoying complimentary food and entertainment from Rochester’s growing creative community. The evening will conclude with a community jam session. We encourage you to bring your instruments, voices and dancing shoes or you can just sit back, relax and enjoy! *(Directions will be provided for anyone needing them.)*

FEATURED SPEAKERS

NICOLE AMRI - As Program Director for **SAY Sí**, Nicole currently serves on committees in San Antonio and nationally, including SA2020, Excel Beyond the Bell SA, San Antonio's Trauma-Informed Care Consortium, and the ARE (Artists for Racial Equity) Network under the National Guild for Community Arts Education. She is a multidisciplinary artist who explores human rights issues with a focus on interpersonal relationships and societal conditions. www.saysi.org



EMILY DANIELS (M.ED., MBA, NCC) - Emily's career began with a strong desire to "make a difference in the world." Hired at 23 as an executive director of a start-up after school program for inner city children in Wilmington, DE, she witnessed the complex intersection of race, poverty, neighborhood violence, and personal trauma. That experience committed her to making a difference for those under-served, invisible, or misunderstood. She holds a B.A. in Sociology and Women Studies; Master's of Education in School Counseling; and a MBA in Organizational and Environmental Sustainability. <https://herethisnow.org/>



RAJNII EDDINS - Hailing from Seattle, Washington, Rajnii Eddins has been performing poetry and engaging diverse audiences for more than 20 years. Rajnii is adept in engaging authentic youth voice from elementary to high school by utilizing creative expression and call and response to inspire young people to create their own pieces as well further their love for wordplay and literacy.



ARTS IN REACH - Arts In Reach (AIR)'s mission is to empower teenage girls through inclusive, creative community. Since 1997 AIR has offered cost free arts and mentoring programs with transportation assistance to at-risk teens in the greater Seacoast area. AIR offers programs in the performing, visual, and literary arts that balance high quality artistic instruction with personal development and community building. <https://artsinreach.org/>

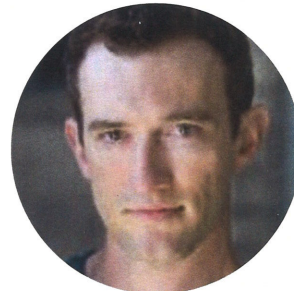
LAURA REEDER - Laura Reeder is an artist, teacher, and human who also advocates for arts education every single day. Dr. Reeder has helped artists to become teachers and leaders at Boston University and Massachusetts College of Art as well as training non-arts educators to make meaningful use of their own creativity with diverse learners. Her passion for social justice comes from years as a teaching artist and non-profit organization leader in high-poverty communities that were transformed by the arts. <https://laurakreeder.com/>



DAVID DIK - David A. Dik is the National Executive Director of Young Audiences Arts for Learning, the nation's largest arts in education network. Prior he served as the Managing Director of the Metropolitan Opera Guild, and the Guild's Director of Education. He is on the Leadership Team of the National Coalition for Core Arts Standards, Board of Directors for the Music-in-Education National Consortium, the Advisory Committee of the Arts Education Partnership (AEP). David's career began as a certified school music educator. <https://youngaudiences.org/YAArtsforLearning/MissionStatement>



SOMAYEH KASHI - First generation American, first daughter of two Iranian born parents that immigrated to the United States in the late 70's. Somayeh began her life within the fine arts from an early age. Her parents enrolled her in diverse art courses, and even private lessons in Iran where she lived for a few years. This all led her to Massachusetts College of Art and Design, receiving a Bachelor in Fine Arts with a concentration in Architectural Design. Somayeh went on to earn a Masters in Secondary Education. She teaches Visual Arts full-time at Rundlett Middle School, and oversees their National Junior Art Honor Society. She is a painter, photographer, and experiments with other art forms, as well as an avid world traveler.



C. ROBIN MARCOTTE - Robin Marcotte is a physical theatre artist and educator. He's an Assistant Professor of Theater at Boston Conservatory at Berklee and a teaching lecturer at PSU. He has served as the Executive and Co-Artistic Director of the award-winning Hotel Obligado Physical Theatre Company; a company member of Mum Puppet theatre; and was the Managing Director of the Philadelphia School of Circus Arts. In his 20 year career, he's toured nationally and internationally, performing, teaching and creating works of theatre. He holds an MFA in Interdisciplinary Arts from Goddard College and is a graduate of the Dell'Arte International School of Physical Theatre. He and colleague Amanda Whitworth, alongside Dr. Bobby Kelly, co-founded **Articine**, which uses the performing arts as a treatment for healing chronic pain and other health conditions. www.robinmarcotte.net/



AMANDA WHITWORTH - Amanda Whitworth is a teaching artist with an M.Ed in Integrated Arts Education, and leads and consults on interdisciplinary projects in technology, design, wellness, business, and public education. Originally from metro Detroit, she has lived in central New Hampshire since 2006. As the

FEATURED SPEAKERS

Director of Dance at Plymouth State University, has integrated interdisciplinary thinking and collaborative performance into the curriculum and spearheaded networks of growth, service and advocacy across New England through innovative cross-sector partnerships. Named one of NH Union Leader's "40 Under 40" in 2019 and awarded a Vermeil Medal from the Academy of Arts, Sciences and Letters in Paris, France, Amanda assumes the alias of **Tributary Dance**, working as a performer of dance and physical theatre. She is the former chair of the NH Dance Alliance and is the co-founder of **Articine**, an organization integrating arts strategies into health-care settings. <https://tributarydance.com/>

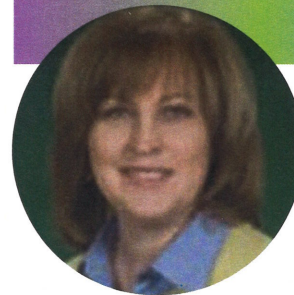
BOBBY KELLY, MD, MPH - Bobby Kelly, MD, MPH is a Family Medicine and Preventive Medicine trained physician who has worked in primary care, physician leadership and public health in NH over the last decade. After completing medical school at Drexel University College of Medicine in Philadelphia where he received the Academy of Family Physicians award, he trained at the NH Dartmouth Family Medicine Residency at Concord Hospital. Dr. Kelly completed his Leadership Preventive Medicine fellowship at Dartmouth-Hitchcock and received his MPH degree at The Dartmouth Institute for Health Policy and Clinical Practice. He is currently a primary care physician in the NH Seacoast, where he received the 2019 Exemplary Community Service award from Exeter Hospital. He is passionate about creative collaboration opportunities.



SHANNON LAINE, MT-BC - Shannon Laine, MT-BC is a Board Certified Music Therapist. She founded the music therapy program at the Manchester Community Music School in 2006, the first of its kind in the state. Shannon's music therapy experience is in Special Education, focusing on children who are deaf, blind, on the Autism spectrum and have other identified needs. She has worked extensively to educate and advocate for music therapy as a related service on IEPs. Shannon serves on the NH Music Therapy Task Force, advocating for the licensure of music therapists; and the writing teams for the revision of the NH State Arts Standards for Music and Arts Integration. In October 2019, Shannon received a Presidential Service Award for Service and Success from her alma mater, Anna Maria College. <https://mcmusicschool.org/>



CHILDREN'S MUSEUM OF NEW HAMPSHIRE - The Children's Museum of New Hampshire actively engages families in hands-on discovery and is proud to be an integral economic, educational and cultural resource for the Seacoast region and the tri-state area. They embrace the opportunity to innovate and evolve, ensuring they remain a vital source for experiential learning and play for generations to come. Their vision is to inspire all to become the next generation of innovators and creative thinkers.



MARCIA M^cCAFFREY - Marcia McCaffrey, Arts Consultant for the NH Department of Education, has 20 years of leadership experience at the state education agency working with partners and key stakeholders to interpret and implement quality arts education for the state's public education sector. Her responsibilities include the content areas of dance, media arts, music, theatre, visual arts, and physical education as well as grants coordinator for the federal Rural Low Income Schools program. She actively trains teachers and supports schools and districts in their ever-evolving efforts toward more and better arts education for all students. Marcia has served as a grant panelist for the National Endowment for the Arts; national conference presenter on the power of standards and assessment in teaching and learning; dance educator for public schools and higher education; proprietor of a small dance business; and director of a seniors' dance company.



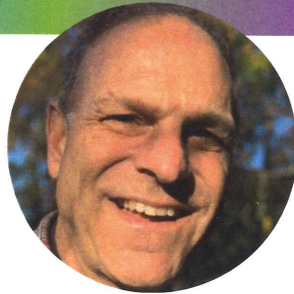
RICHELLA SIMARD - Richella Simard is photographer using film in medium and large format, alternative and mixed media. She highlights awareness of our natural world and our interaction with it. Richella is a full time Visual Arts Educator in Manchester at West High School where she leads courses on community arts, visual arts, photography and painting and is the founding faculty advisor for the West for Equality (W.E. formally the Gay Straight Alliance) club, 2009. Her Collaborative Community Arts class is working on facility beautification and with students with low motor skills through student lead teaching. In 2018, she shepherded a student through curating an exhibition on mental health that was shown at Jupiter Hall and has continued to develop into a yearly exhibition, raising funds for related organizations. She is adjunct faculty at the Institute of Art & Design at NEC in the BFA photography department, teaching digital and handmade classes. Richella is an avid hiker and outdoors person.



TAINTOR CHILD - Taintor is the Art Project Manager for MindsEye Designs' at Community Partners, which developed out of an invitation to provide arts enrichment to adults with developmental disabilities. Taintor received a Fine Arts Diploma from Clark University and the School of the Worcester Art Museum. She holds a B.A. at Lesley University with an emphasis on Creative Arts and Learning and a certification to teach grades K-3. Prior, she made wearable art and sold it as a street vendor and cooperative gallery member in Woods Hole, MA. She has taught in Arlington Public Schools, Berwick Academy, the Marshwood adult education programs, and as an experience guide educator at the Children's Museum. Taintor is also an experienced gardener working for several local historic sites.

FEATURED SPEAKERS

WILLIAM ROGERS - William Rogers is a media director, producer and educator. He loves picking up cameras and recording the fascinating people around him and supports other to do the same. Best known for his documentary profiles of ski racer Bode Miller (FLYING DOWNHILL) and favorite uncle, Joe Rogers (MY UNCLE JOE), Bill has long empowered students by facilitating their use of camera and editing equipment to tell stories. How can all of us transform our world by seeing, hearing, recording, and presenting what is important to us? Bill is the founder of SomeCity Films and is a teacher at Somersworth High School.



STEVE PAPPAGOHN - Steve Pappagohn has been the Director of the Dover Teen Center, coordinated by the Community Outreach Bureau of the Dover Police Department, for the past 14 years. Prior, Steve was an Assistant Dean of Students at the University of New Hampshire where he specialized in working with the fraternity and sorority community. Receiving a Master's Degree in Education from Keene State University, Steve's focus and expertise has been leadership development in young people. In his spare time, Steve enjoys playing men's softball, golfing, attending live music shows and playing fantasy sports.



KATIE DONOVAN - Katie is in her 12th year serving as a teacher of English to Speakers of Other Languages. She spent 5 years teaching ESL in Bronx, NY and 5 years teaching ESL in Lawrence, MA. Currently, she teaches ESOL in Somersworth, NH serving a small but diverse bilingual student population. Katie strives to validate immigrant students' identity and culture by immersing her students in the arts and providing them with authentic shared experiences which give a sense of meaning and connection to their new American community. She is currently working in collaboration with co-presenter Bill Rogers to empower students to share their story with a wider audience through digital narrative and storytelling.



SAM PAOLINI - Sam Paolini has been a professional artist since dropping out of Massachusetts College of Art in 2008, teaching for many organizations such as Main Street Art, Arts in Reach, and at schools across the region. In March 2010 they founded Wrong Brain, a zine featuring art and writing of local creatives. Wrong Brain has since expanded to 10 zines, 3 audio compilations, annual alternative art fairs, gallery shows, poetry readings, and other multimedia art events. In March 2019, Sam opened their first art & upcycled clothing retail store in a shared space with Wrong Brain, providing a venue and outlet for unconventional, under-represented and emerging artists, writers, and musicians. Sam is the resident artist for rock band People Skills, has worked for Dean Ween and Tera Melos, and has trav-

elled across the US- painting murals for free for community centers.



GENEVIEVE AICHELE - Genevieve Aichele is the founder and Executive Director of New Hampshire Theatre Project in Portsmouth and has performed, directed and taught theatre arts throughout the United States and internationally for over 40 years. She has written hundreds of playscripts for young people, represented by Leicester Bay Theatricals, as well as an original musical adaptation of Aristophanes', the oral history play, Neighborhoods, earning the 2001 Spotlight Community Arts Award, and Dreaming Again, a docu-drama about immigration in NH. In 2017, she founded NHTP's acclaimed Elephant-in-the-Room Series. nhtheatreproject.org



CATHERINE STEWART - Catherine Stewart, New Hampshire Theatre Project's Artistic Director, has been a resident artist since 2014. A member of Lincoln Center Directors Lab, she is a playwright and director using documentary theatre to excite social and political change. She is currently a Creative Community Fellow for National Arts Strategies, developing arts-integrated programs supported by public policy. Since relocating to NH in 2012 from her native Scotland, she has been a freelance director and facilitator with organisations including Arts in Reach, Winnepesaukee Playhouse and New England Arts for Literacy. Directing projects at NHTP include Constellations, Charm, Ada and the Engine, and The Niceties. Her most recent playscript, Over the Fence, won first place in the PPAF 30 Pages in 30 Days Playwriting Festival, staged at Prescott Park Arts Festival in 2017.

PITTSFIELD YOUTH VOICE IN IT TOGETHER (PYViiT) - PYViiT is the youth-led organizing committee of Pittsfield Listens, encouraging the power of youth voice on issues and policies that directly affect their education and life in the town of Pittsfield, NH. Since 2013, PYViiT has worked to shift the current power dynamics in the community and its schools. PYViiT leaders work in their town to build relationships and in the broader New England community to explore collaborations with other youth led groups and participate in leadership development opportunities and trainings.



SARAH DUCLOS - Sarah Duclos is a freelance choreographer and dance educator who holds a Bachelor of the Arts in Theatre and Dance. As a young dancer, Duclos worked directly with Liz Lerman Dance Exchange during their two year residency leading up to The Shipyard Project - sparking a lifelong interest in site-specific, community-based dance work. While studying at UNH, Duclos founded Neoteric Dance Collaborative (NEO), a multi-disciplinary dance company with a mission to

FEATURED SPEAKERS

stop dance from disappearing in rural and suburban communities by building community through the art of dance. NEO has performed Duclos' choreography on stages across New England and New York City. Duclos has worked as a master teaching artist for Boston Ballet's Education and Community Initiatives and is a faculty member at Phillips Exeter Academy, Department of Theater and Dance, formerly serving as interim Director of Dance. Internationally, Duclos has been a dance facilitator at the Abhainn Ri Festival of Participation and Inclusion in Kilkenny, Ireland.

<http://www.vimeo.com/neotericdance>

